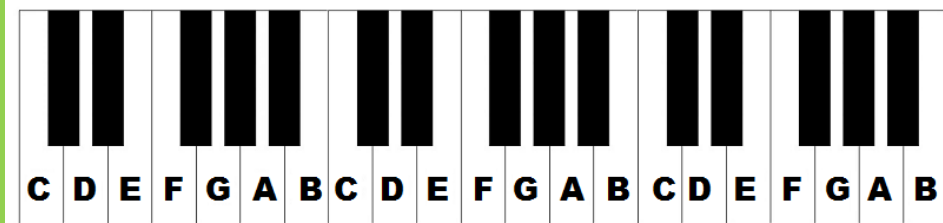


KEYBOARD & UKULELE

The musical alphabet goes from A-G

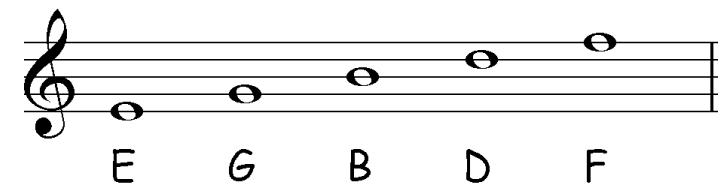
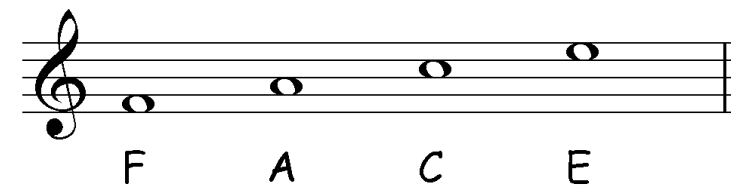
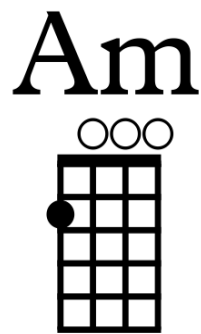
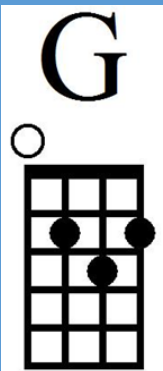
A B C D E F G ~~H~~

- Tempo** – How fast / slow
- Dynamics** – How loud / soft
- Timbre** – Types of sounds
- Texture** – How many instruments are playing
- Pitch** – How high or low
- Rhythm** – how long or short the notes are
- Structure** – the order of the different sections of music
- Staff** – The 5 lines that music is written on

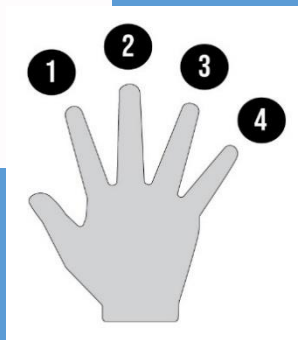
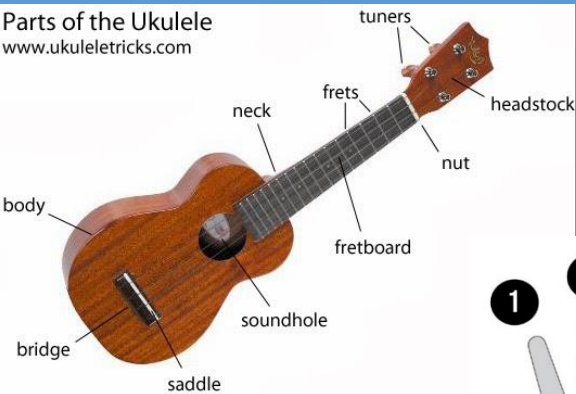


b's Flats

#'s Sharps



Parts of the Ukulele
www.ukuleletricks.com



Note Name	Note symbol	Rest symbol	Number of crotchet beats
Semibreve			4
Minim			2
Crotchet			1
Quaver			1/2
Semiquaver			1/4